



Moody Radio FTP Server changes to Secure Transfers Only | Sept. 15, 2020

The **Moody Radio Affiliate FTP** site at <ftp://ftp.moody.edu> will be changing Tuesday, Sept. 15 at 12 a.m. CDT as the Moody ITS Department plans to **turn off** unencrypted FTP connections. The Moody Radio Affiliate FTP site will switch over to FTPS only and anyone who is still using unencrypted logins will no longer have access to the FTP server until they update their clients.

The move to secure transfers was originally scheduled for April, but was postponed due to the COVID-19 Pandemic and associated disruption of normal business activities.

Our hope is that our past communications on the planned changes, all FTP users will be able to move to secure FTP login and file transfers before ITS turns off the unencrypted part. The reason why we're doing this is FTP is pretty unsecure as it stands. Migrating to FTPS will help tighten security up on our Network and help better protect Moody Bible Institute from external threats.

IMPORTANT IMPORTANT IMPORTANT IMPORTANT IMPORTANT IMPORTANT IMPORTANT

If you use Windows Explorer/Internet Explorer as your FTP client of choice, it will no longer work when this change comes into effect. Windows Explorer and Internet Explorer only supports unsecure FTP. We recommend that you download [WinSCP](#) or [FileZilla](#) for your FTP client as a good alternative and set that up using secure FTPS.

IMPORTANT IMPORTANT IMPORTANT IMPORTANT IMPORTANT IMPORTANT IMPORTANT

There are so many FTP clients out there it would be impossible to cover them all in one email, but this paper will cover two popular free ones. Users may need to consult their product's documentation or inquire of their support if they have any questions getting this set up if the steps below don't help to configure their 3rd party client.

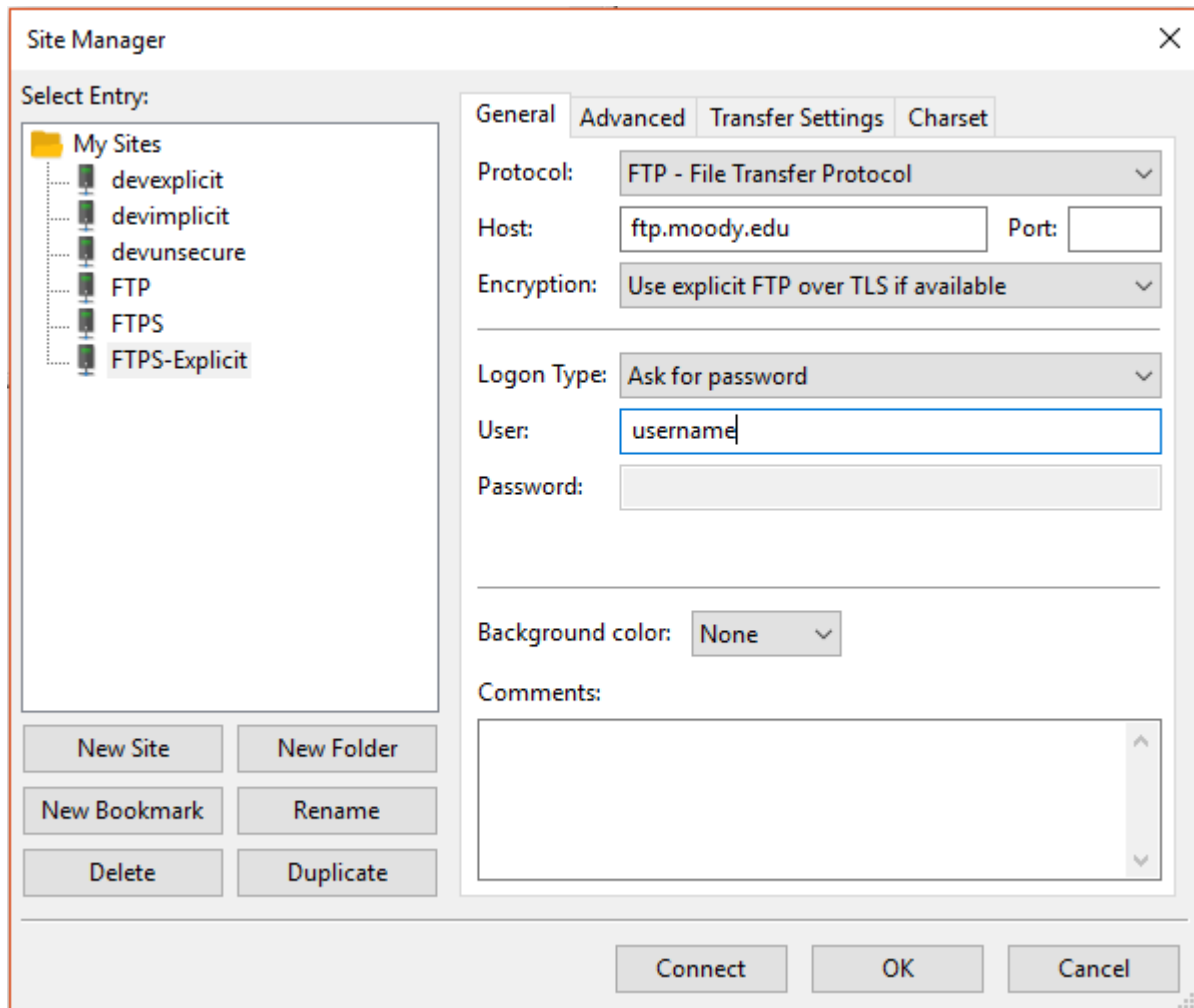
Here are the steps in **FileZilla** just for a guide as to how to do this, but settings can be mimicked in other FTPClients (WinSCP setup is the second example; Radio Spider is a

third example; TotalCommander is the fourth example and a good alternative to Windows Explorer, along with Total Recorder is shown further below):

(Note: If you just type in <ftp.moody.edu> with your username and password it will automatically default to FTPS. This is just being used as an example for other clients that may not automatically do this.)

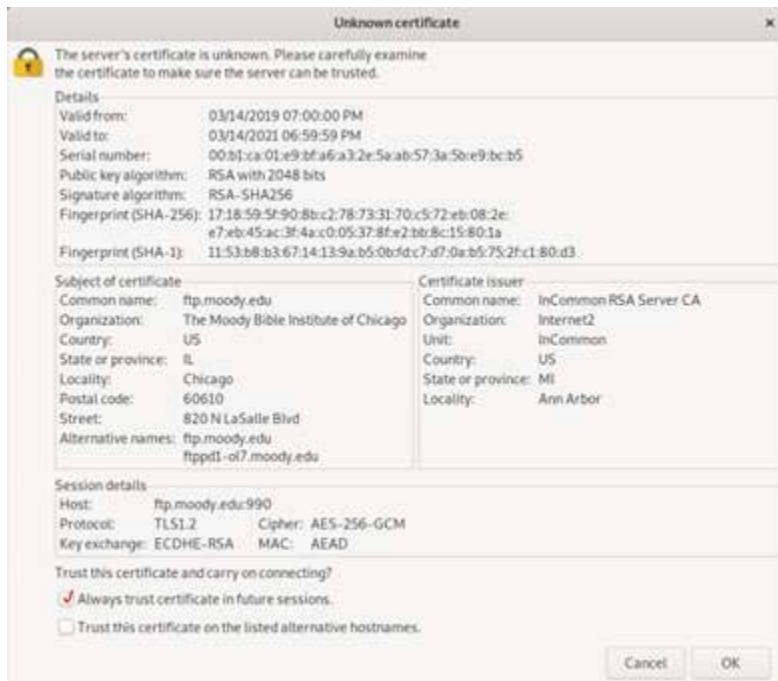
1. How to Configure FileZilla

If you open up the **FileZilla Site Manager**, you can set up your connection. For Encryption you can choose either Explicit FTP over TLS or Implicit FTP over TLS. Explicit will be preferred, but we've made both available.

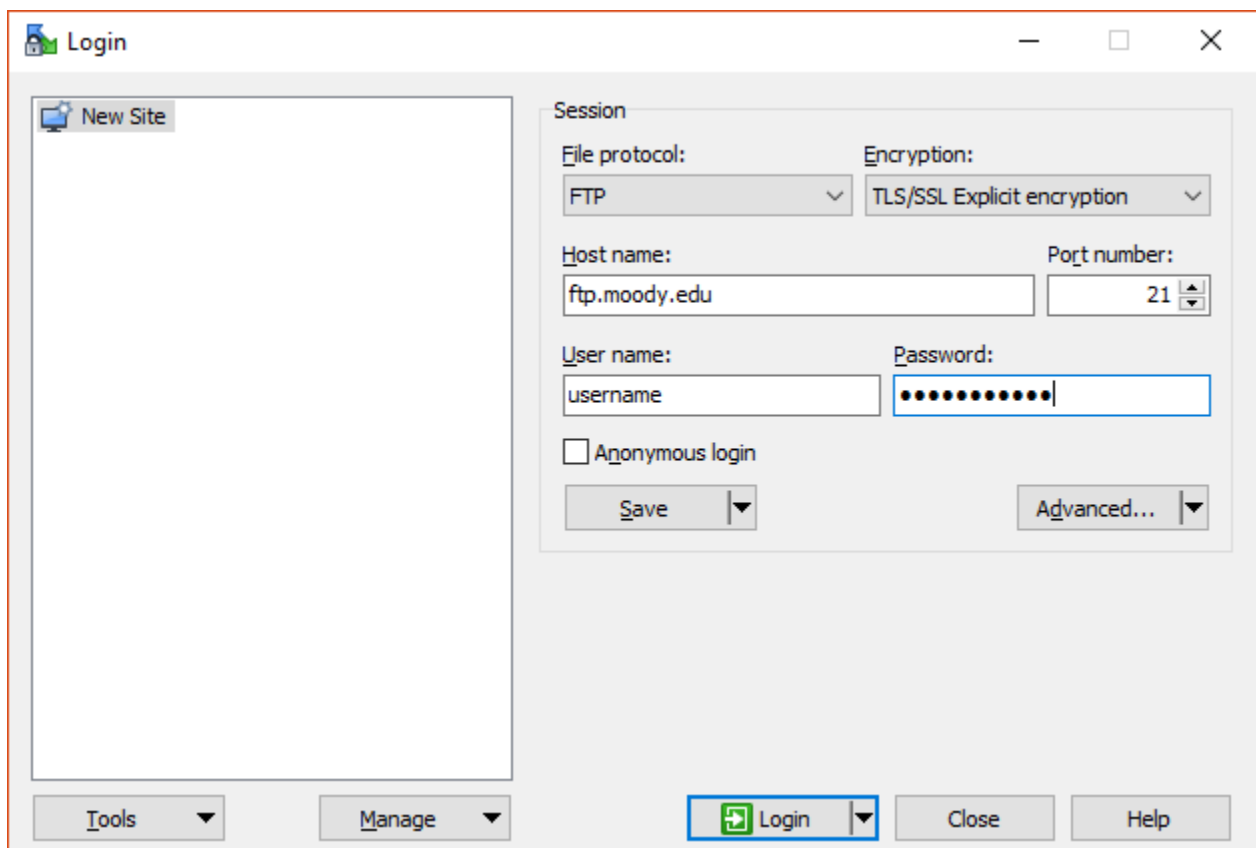


Users may also need to enable Passive Mode (under Transfer Settings in FileZilla), but the client may again be able to negotiate the proper connection.

Users most likely will then need to accept the certificate-warning message that pops up asking if you trust the site. Just click "Always trust certificate in future sessions" and OK.



2. Here is how to configure WinSCP:

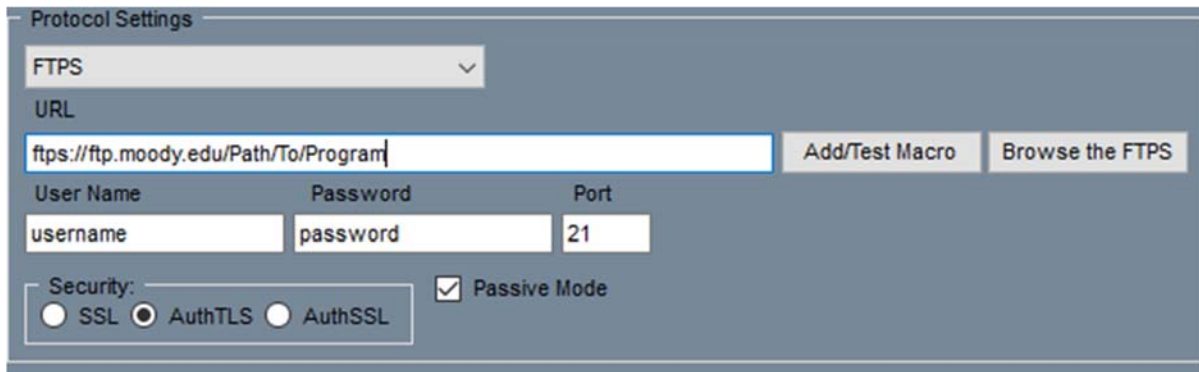


Click “Save” before “Login” to save this information in the program.

Please note: For the host it will always be <ftp.moody.edu>. If you type in ftps.moody.edu nothing will work.

3. Configuring Radio Spider for FTPS

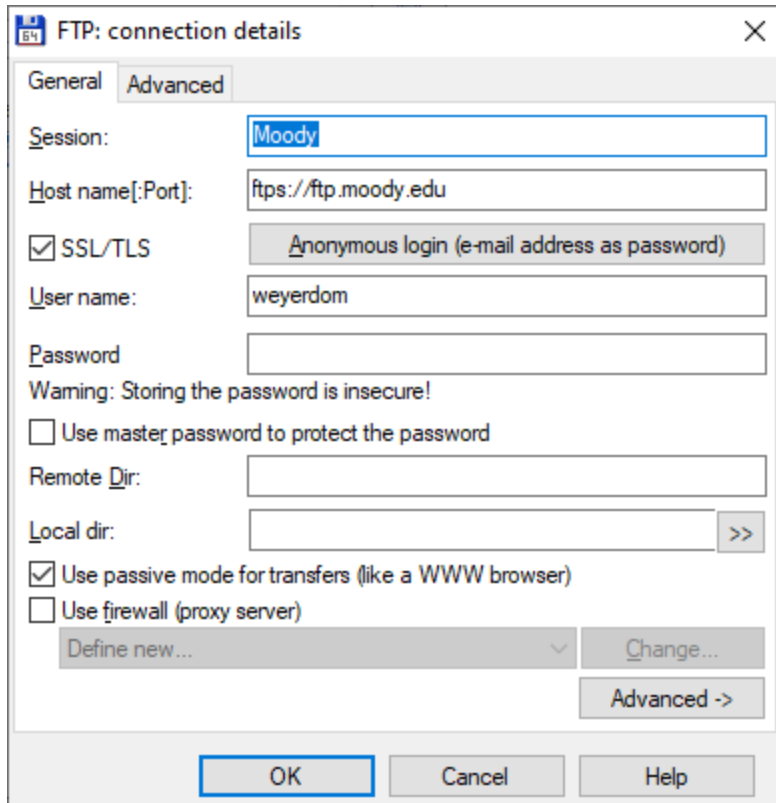
Below is a picture of a working Radio Spider configuration if anyone else needs this information.



Just a reminder that we will not be supporting SFTP on the server. SFTP and FTPS are completely different organisms so if you hear of anyone having issues connecting via SFTP, ask them to FTPS (FTP over TLS).

4. Configuring Total Commander for FTPS

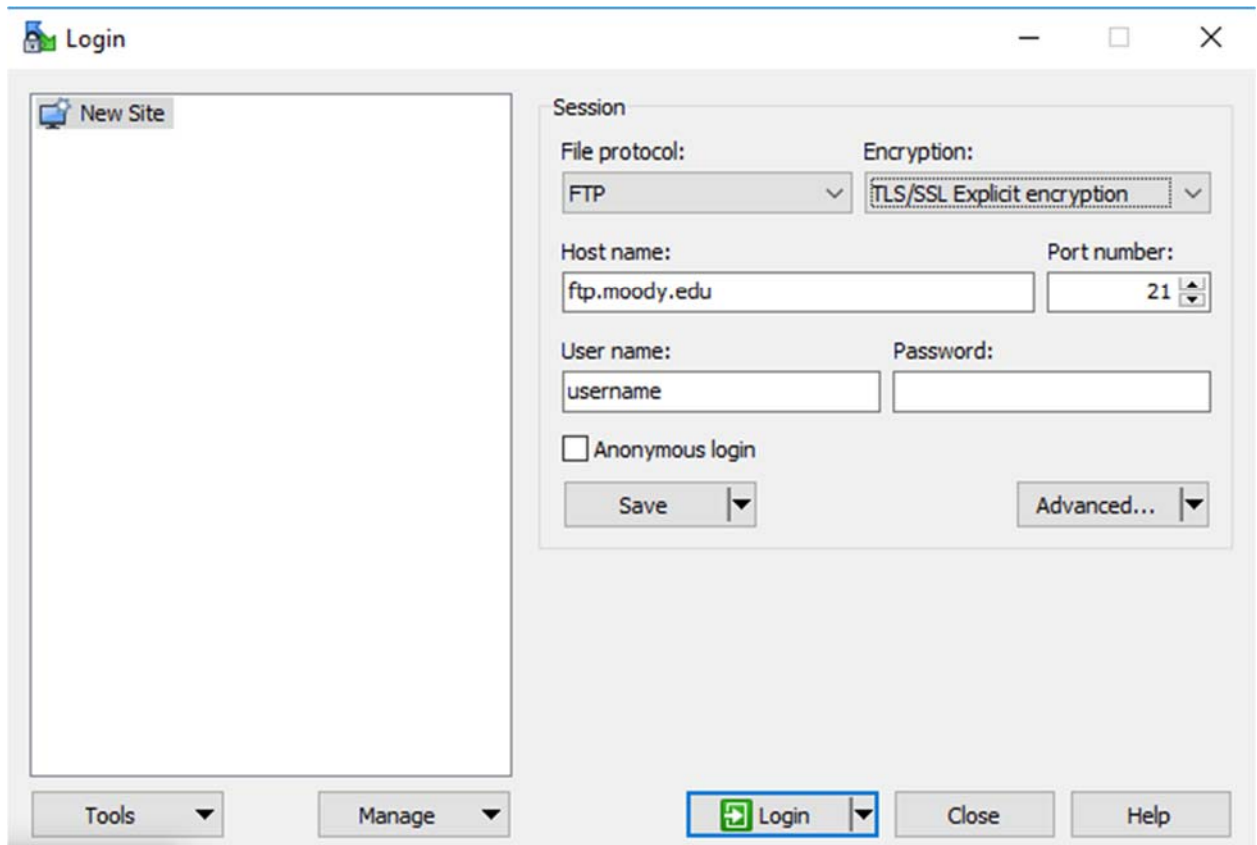
We looked at Total Commander and here were the settings that worked for us. Try these out! I believe you need to add an “s” to the ftps://ftp.moody.edu and check the SSL/TLS box. You may also need to check the “Use Passive Mode for Transfers (like a WWW browser)”



5. A good replacement for Windows Explorer

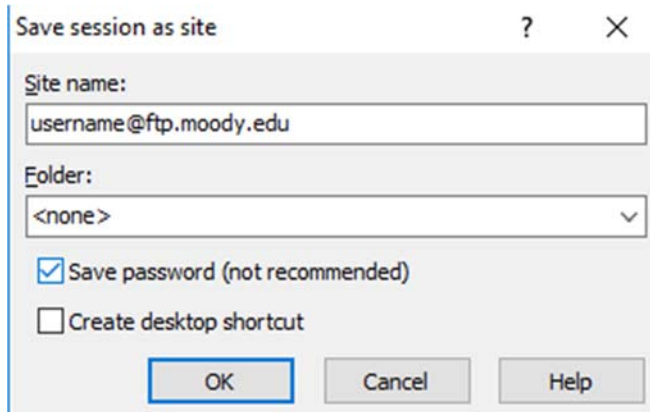
Let's take a closer look at WinSCP. This is the program that can act like a regular Explorer page. Here's what you'll need to do (you might need to reinstall it if you installed it in the past):

1. Install WinSCP: <https://winscp.net/download/WinSCP-5.15.9-Setup.exe>
2. During the Install process you'll come to a screen that asks you to choose an interface style. **You'll want to choose Explorer and not Commander.** Commander looks just like FileZilla, but Explorer was designed to mimic Windows Explorer.
3. After the install is done, you'll need to set up your profile on WinSCP. Don't hit "Login" yet though...



4. After you filled out the information like the box above make sure to click “Save”. You can put your password in if you wish, but might be simpler and better to leave it blank for when you go to change your password in the future. If you do put your password in, make sure you click “Save Password (not recommended)” check box. You can also change the site name to whatever you want. It doesn’t have to remain your username@ftp.moody.edu. You can just call it Moody if you desire.

You can also create a desktop shortcut directly to the Moody FTP server if that is a desire.



5. Once in, you can click and drag files right to and from the FTP like you do with Windows Explorer.

6. Configuring Total Recorder for FTPS

Paul Carter at WCRF, Cleveland, OH says they are using Total Recorder for ftp file transfers. He opened up Total Recorder and checked the box for SSL/TLS, which changed it to passive mode. The path also changed to ftps://ftp.moody.edu. This is the only change that was required at WCRF to enable FTPS.

And that's it!